

Customer :

customer

Customer part :

customer part

Comment :

Comment

S1=6.31

S2=7.29

Tmax=453

Tp S2=492.0

PI=0.46

HI=110

Sample =1762.80

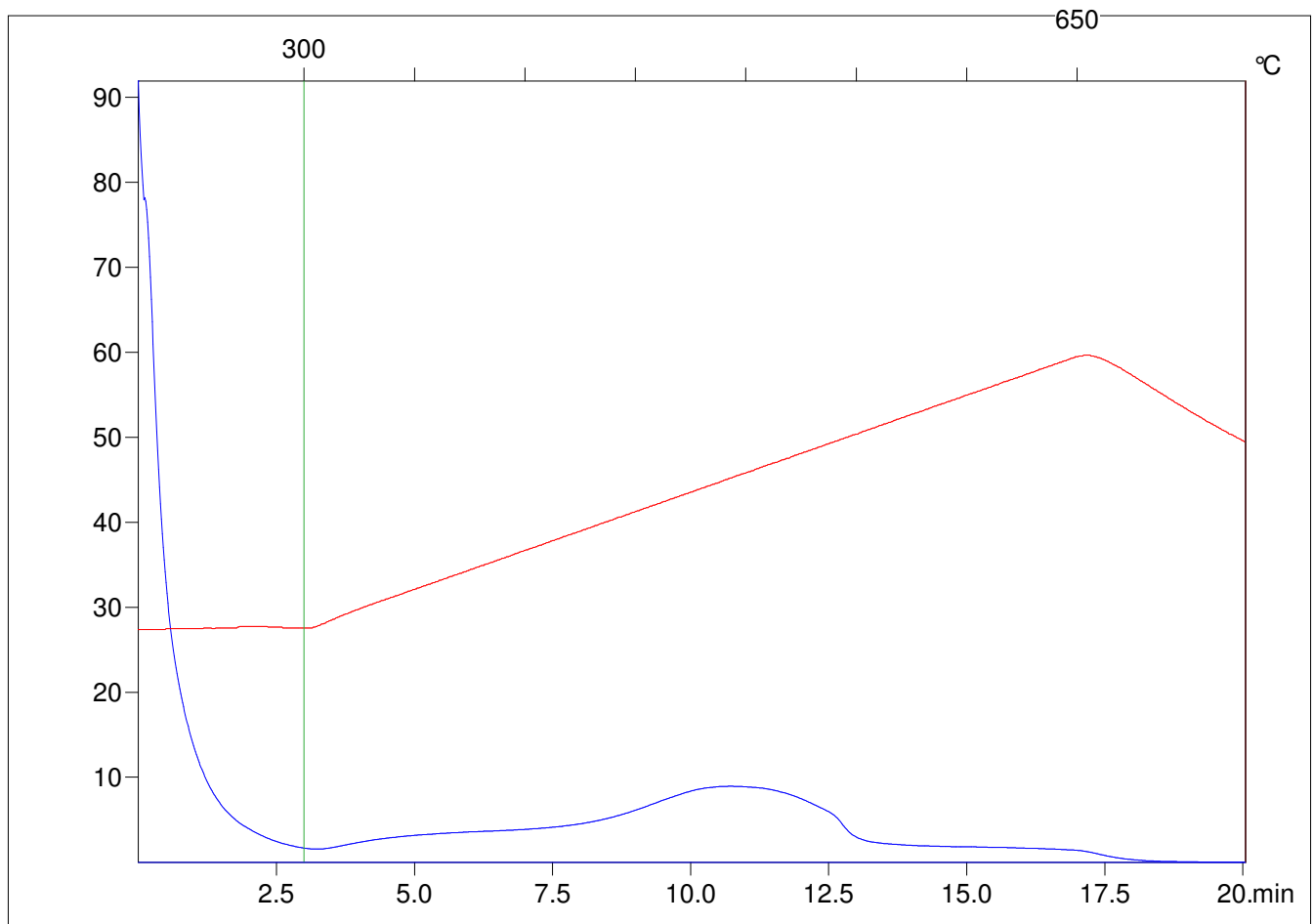
Method =Bulk Rock

Cycle=Basic

KFID(10*9)=1444

Qty =70.8

TOC=6.6



C:\VINC\PK3_1792\PK027.R00 : FID pyrolysis graphic

State Ok

Pyro Status Negative value

Oxi Status Negative value